



DESIGN AND CONSTRUCT

GR DESIGN & CONSTRUCT

Issue Two

YAMBUK CARAVAN PARK

Yambuk Caravan Park, managed and owned by Moyne Shire Council, was in desperate need of a restroom facility upgrade. The Shire recently engaged Gunnensen Recreation to design an aesthetically pleasing, yet durable structure for the local saltwater environment.

The restroom facility incorporated disabled access cubicles, showers and a laundry for the many tourists staying at the caravan park.



Yambuk Caravan Park Restroom & Shower Block

Special points of interest:

- Brand new toilet and shower block recently installed at Yambuk Caravan Park
- The project was designed, engineered, constructed and installation managed by Gunnensen recreation using local and experienced contractors.,
- Aesthetically pleasing yet durable for the local saltwater environment.

The Shire's main requirements for the project included:

- All steel to be hot dipped galvanised; Internal and external cladding to be stained shadowclad with hardwood battens for ventilation; Waste treatment system to use existing septic tanks, coupled with rainwater tanks; Concrete slab to have a broom finish; and the installation of a hot and cold water system.
- Works to be completed within the Shire's time and budget constraints.
- Installation to be managed by a principal contractor using the various local and experienced contractors.

This months Completed Projects

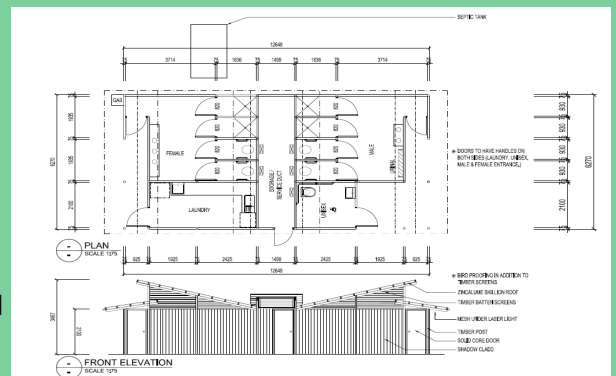
Curved Shelter
Kardinia Park,
Geelong

2D Restroom
Ringwood

Timber Truss Bridges
Windmill Island,
Ballarat

Another high profile project completed for Moyne Shire Council by the Gunnensen Recreation team!

Contact Gunnensen Recreation for more information on this project or for details on how your next project can be completed with our own comprehensive range of designs or built to your design requirements.



www.gunnensens.com.au/recreation