



DESIGN AND CONSTRUCT

GR DESIGN & CONSTRUCT

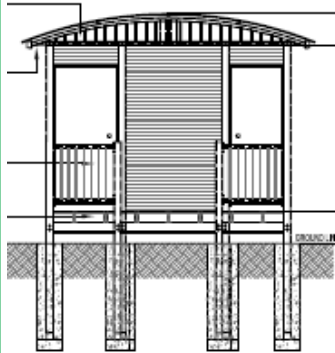
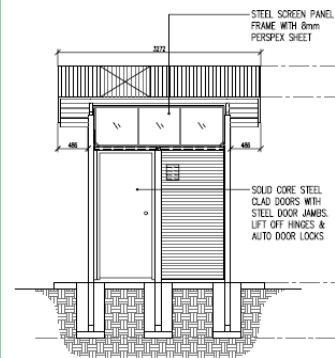
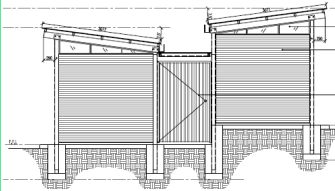
Issue Fourteen - July 2009

LATEST CUSTOM STRUCTURES BY GRDC

This twin disabled restroom was recently installed at the Point Gellibrand Coastal Heritage Park in Williamstown. Catering for the nearby marine environment the restroom comprised of hot dipped galvanised steel painted with two part epoxy enamel and Ultra 2000 Polycarb roofing.

Designed and constructed by GRDC, the restroom also features timed automatic door locks ensuring the restroom is only open during daylight hours to prevent any anti social behaviour.

The stainless steel fittings include baby change table, pans, basins and grab rails all built to Australian Standards. GRDC also carried out the surrounding landscaping works including the blue stone retaining walls and the asphalt connecting paths.



**Your One Stop Shop
for Complete Project
Management!**

1. Design
2. Engineer
3. Fabricate
4. Install
5. Project Handover

Call us today on
1300 733 492



Another recently completed project supplied and installed by GRDC is this 32 x 2.0m Steel Truss Footbridge located at the Sale Common in South East Victoria. The old derelict footbridge was demolished and removed from the area making way for the new footbridge. Comprising of hot dipped galvanised steel trusses, bearers and joists with Banksia panel and treated pine joists and decking the new footbridge is practical and eye catching.

Another successful restroom project designed and constructed by GRDC is this single disabled curved roof restroom built on a hybrid waste system. Located at Crusoe Reservoir in Kangaroo Flat, Bendigo the restroom features both internal and external colourbond cladding, steel wall and roof framing and all architectural hardware and toiletware were supplied by GRDC

