

Call GRDC for a no obligation discussion on your open space needs.

- Shelters * Restrooms * Boardwalks/Access Structures * Footbridges * Street Furniture *
- Standard & Custom Structures



Dandenong City Council

Burden Park

- 2x disabled, 1x ambulant cubicle arrangement
- Painted steel posts and roof frame
- External cladding colour bond
- Internal cladding—Mini Orb
- Aluminium decorative shade screens
- Stainless architectural hardware, pans and basins
- Semi solid core doors—steel clad
- Rough in & fit off plumbing and electrical works
- Full installation service, including concrete slab & permits



Monash City Council

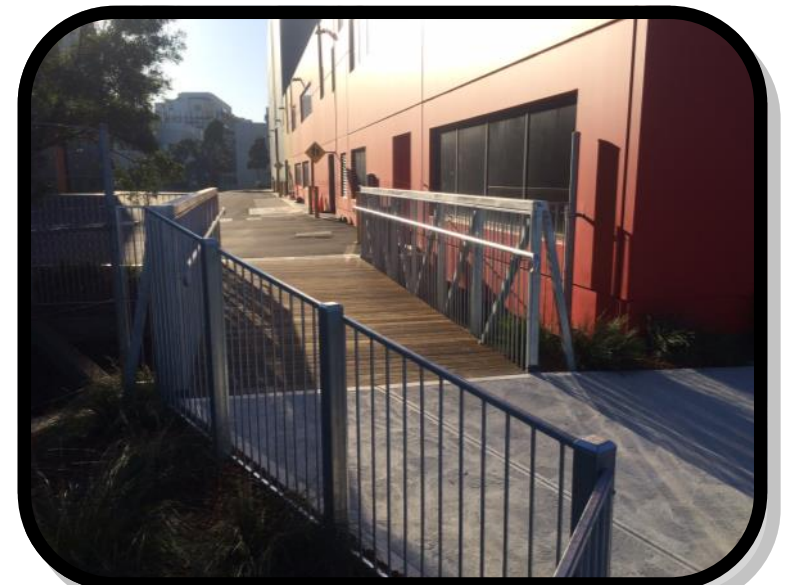
Holmesglen Reserve

- 11m x 6m custom skillion shelter
- Hardwood clad steel posts
- Hardwood purlins
- Hardwood battened pergola
- HDG fixings and brackets
- Colour bond roofing
- Supply & install footings

Kane Construction

Dockland's Studio

- 8m x 2m steel truss footbridge with approach barriers
- HDG bearers
- LOSP treated pine joists
- ACQ treated hardwood decking
- BA drawings & engineering certification
- Delivered & assembled in one piece



Bendigo City Council

Heathcote Skate Park

- 2 x custom skillion shelters
- All steel construction
- Decorative screens
- Paint to posts
- Installed to footings
- Obtain building permit
- Engineering certification

Call us today on 1300 733 492
 Email us your enquiry at reprodivc@grdesignandconstruct.com.au
www.grdesignandconstruct.com.au