



DESIGN AND CONSTRUCT

- GRDC also have an extensive furniture range, you can view our latest products at our product gallery or call us today for a free quote on both standard or customised furniture accessories including picnic settings, platform seats, tree surrounds, bench and seats.
- Call us today to discuss your next open space project!

**Ph: 1300 733 492**

### **Your One Stop Shop for Complete Project Management!**

- 1. Design**
- 2. Engineer**
- 3. Fabricate**
- 4. Install**
- 5. Project Handover**

**Call us today on  
1300 733 492**

## **GR DESIGN & CONSTRUCT**

**Issue Sixteen - September 2009**

### **LATEST CUSTOM STRUCTURES BY GRDC**

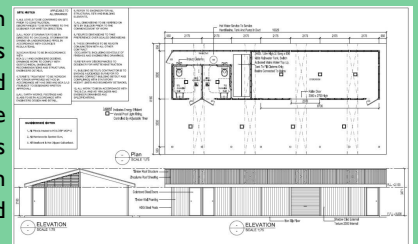
#### **MILL PARK SECONDARY COLLEGE Sports Amenities Building**



This sports amenities block was designed by GRDC in conjunction with the City of Whittlesea for the Mill Park Secondary College. This facility was designed to cater for the new synthetic sports field located nearby. Comprising of two disabled compliant cubicles, large change room area and lockable store room with roller door for sports equipment, this sports toilet is ideal for both school and recreation reserves. Utilising the two 1800L water tanks and motion activated lighting the amenities block is both water and energy efficient.

#### **Shelter / Restroom - "Shroom"**

- Internal & external ShadowClad
- Colourbond roofing
- Steel posts
- Stainless steel toileware
- Connected to both water tanks and mains
- Motion activated lighting
- Fully engineered



#### **Myrniong Recreation Reserve**

This impressive structure was designed and constructed by GRDC and funded by the local community for the Myrniong Recreation Reserve. Featuring treated pine posts and roof framing, colourbond roofing, curved LVL's, windows and ample seating it's a shelter that will be used by the local community for years to come!



#### **Loch Sport Stairs**



Proving the versatility of GRDC's capabilities these stairs were recently designed and installed in Loch Sport in East Gippsland. Made from both LOSP treated pine and hardwood this access structure was designed to 5kpa and stretch 40 metres down a steep embankment giving the Loch Sport locals easier access to the beach.

#### **Get your community's kids outdoors!!**

Constructed of tough reinforced concrete this table is a perfect addition to any school, park or open spaces.

- No maintenance
- No theft
- Practically indestructible
- No setup—always ready for action
- Weatherproof

